

Duke Forest Deer Management Program

September 23 - December 13, 2019

The Office of the Duke Forest is preparing for its twelfth hunting season through the NC Wildlife Resources Commission Deer Management Assistance Program. Every year, the Office completes a spotlight survey following the end of the hunt season to identify trends in the deer population. While many factors contribute to annual variations in the observed deer population, the past eleven years of data suggest that the deer management program continues to put downward pressure on the population. Overall, hunting remains a valuable management tool for protecting the health and integrity of the Duke Forest.

The 2019 season will begin on September 23rd and continue through December 13th. During this time, the **Durham, Korstian, and Blackwood Divisions of the Forest will be closed to all public access Monday through Friday.** All divisions of the Forest (except Dailey) will be open on Saturdays and Sundays and on November 28th and 29th in observance of Thanksgiving.

Hunting is conducted by two pre-selected groups; it is not open to the general public. The Durham and Korstian Divisions will be hunted with bow and arrow only while the Blackwood Division will have both bow and gun hunting. For safety reasons, please observe all posted signs and seek alternate locations for recreation.

Researchers, teachers, and students with upcoming or ongoing work in the Forest should contact the Office as soon as possible to discuss arrangements for use during the deer season.

The Office of the Duke Forest appreciates your support and cooperation throughout the program. If you have any questions or concerns, please contact the Office at (919) 613-8013 or via email at dukeforest@duke.edu. You may also check our website (dukeforest.duke.edu/dmap) for updates on the program.

**FOREST
CLOSED**

For the Deer Herd Reduction Program

**MONDAY through FRIDAY
SEP 23 – DEC 13 2019**

DO NOT ENTER

Duke Forest Office
919-613-8013

Signs will be posted at all gated entrances to the Duke Forest. Staff will be issuing citations to any unauthorized users found in the Forest during the hunt.



Duke Forest Closure Notice

From September 23, 2019 through December 13, 2019, the following divisions of the Duke Forest will be **closed to all public access Monday through Friday:**

**Durham Division
Korstian Division
Blackwood Division**

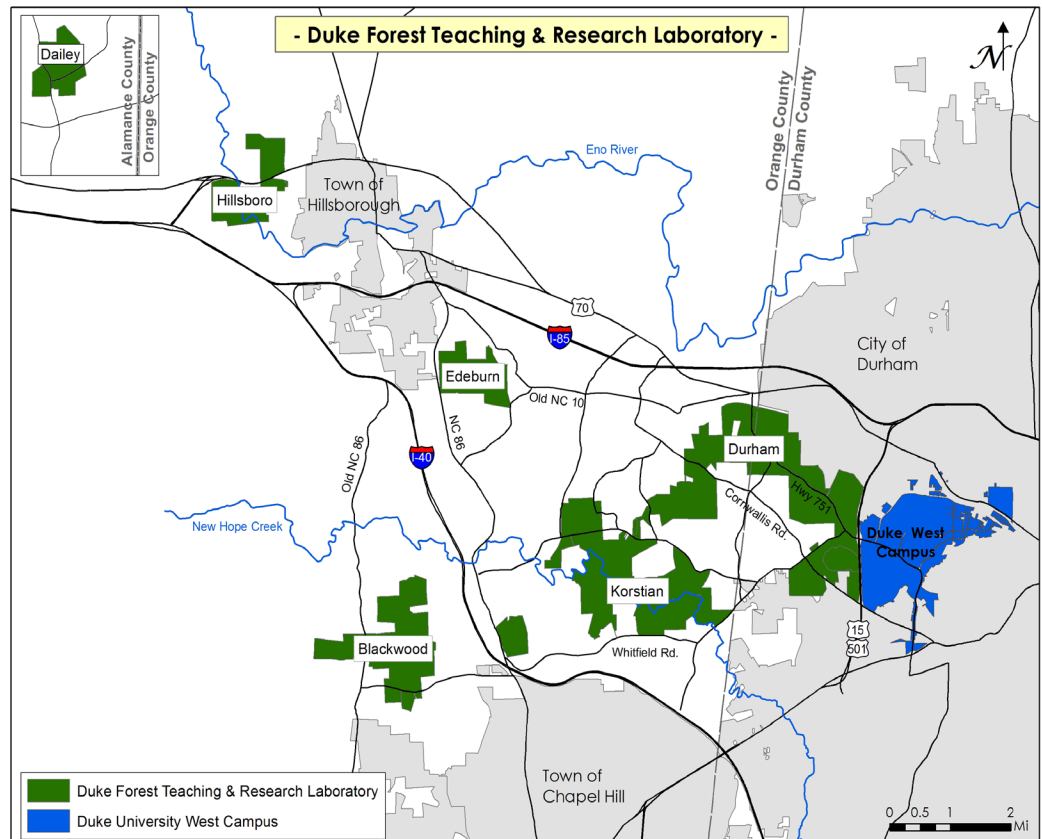
The Edeburn and Hillsboro Divisions will remain open during this period.

The Al Buehler Cross Country Trail and the East Campus Trail are also alternate locations for public recreation at Duke.

This closure is **for your safety** during the Deer Herd Reduction Program.



Thank you in advance for your cooperation



Please see reverse for a quick reference calendar



DUKE FOREST
Teaching & Research Laboratory
ESTABLISHED 1951

Office of the Duke Forest • Duke University • Box 90332 • Durham, NC 27708-0332

Nonprofit
Organization
U.S. Postage
PAID
Durham, N.C.
Permit No. 60

2019 Deer Management Program Notice

Duke Forest Closure Quick Reference Calendar

Days in gray = Durham, Korstian, and Blackwood Divisions closed to all public access.

September 2019

Su	M	T	W	Th	F	Sa
1	2	3	4	5	6	7
8	9	10	11	12	13	14
15	16	17	18	19	20	21
22	23	24	25	26	27	28
29	30					

October 2019

Su	M	T	W	Th	F	Sa
		1	2	3	4	5
6	7	8	9	10	11	12
13	14	15	16	17	18	19
20	21	22	23	24	25	26
27	27	29	30	31		

November 2019

Su	M	T	W	Th	F	Sa
					1	2
3	4	5	6	7	8	9
10	11	12	13	14	15	16
17	18	19	20	21	22	23
24	25	26	27	28	29	30

December 2019

Su	M	T	W	Th	F	Sa
1	2	3	4	5	6	7
8	9	10	11	12	13	14
15	16	17	18	19	20	21
22	23	24	25	26	27	28
29	30	31				

To keep up-to-date with the Duke Forest, sign-up for our newsletter at:
dukeforest.duke.edu/newsletter