

# Duke Forest Deer Management Program

## September 26 - December 16, 2022

The Office of the Duke Forest is preparing for its 15<sup>th</sup> hunting season through the NC Wildlife Resources Commission Deer Management Assistance Program. The 2022 season will begin on September 26<sup>th</sup> and continue through December 16<sup>th</sup>. During this time, the **Durham, Korstian, and Blackwood Divisions of the Duke Forest will be closed to all public access Monday through Friday**. All divisions of the Forest (except Dailey) will be open on Saturdays and Sundays and on November 24<sup>th</sup> and 25<sup>th</sup> in observance of Thanksgiving. The Edeburn and Hillsboro Divisions will remain open as usual throughout the fall.

We appreciate that the demand for nature-based recreation on the Duke Forest remains high. However, deer management remains an indispensable tool for protecting the health of the Duke Forest and its role as a teaching and research laboratory. Please help us safely and effectively take care of the Duke Forest by observing all posted signs and seeking alternate locations for weekday recreation.

Deer management is conducted by two pre-selected hunt groups; it is not open to the general public. The Durham and Korstian Divisions will be hunted with bow and arrow only while the Blackwood Division will have both bow and gun hunting.

Researchers, teachers, and students with upcoming or ongoing work in the Forest should contact the Office as soon as possible to discuss arrangements for use during the deer season.

The Office of the Duke Forest appreciates your support and cooperation throughout the program. If you have any questions, please contact the Office via e-mail at [dukeforest@duke.edu](mailto:dukeforest@duke.edu). You can also learn more about this program at our website: [dukeforest.duke.edu/dmap](http://dukeforest.duke.edu/dmap).

### Duke Forest Closure Quick Reference Calendar

September 2022							October 2022						
Su	M	T	W	Th	F	Sa	Su	M	T	W	Th	F	Sa
				1	2	3							1
4	5	6	7	8	9	10	2	3	4	5	6	7	8
11	12	13	14	15	16	17	9	10	11	12	13	14	15
18	19	20	21	22	23	24	16	17	18	19	20	21	22
25	26	27	28	29	30		23	24	25	26	27	28	29
							30	31					
November 2022							December 2022						
Su	M	T	W	Th	F	Sa	Su	M	T	W	Th	F	Sa
		1	2	3	4	5					1	2	3
6	7	8	9	10	11	12	4	5	6	7	8	9	10
13	14	15	16	17	18	19	11	12	13	14	15	16	17
20	21	22	23	24	25	26	18	19	20	21	22	23	24
27	28	29	30				25	26	27	28	29	30	31

- Durham, Korstian, and Blackwood Divisions closed to all public access
- All divisions open as usual, dawn to dusk

# FOREST CLOSED

For the Deer Herd Reduction Program

**MONDAY through FRIDAY**

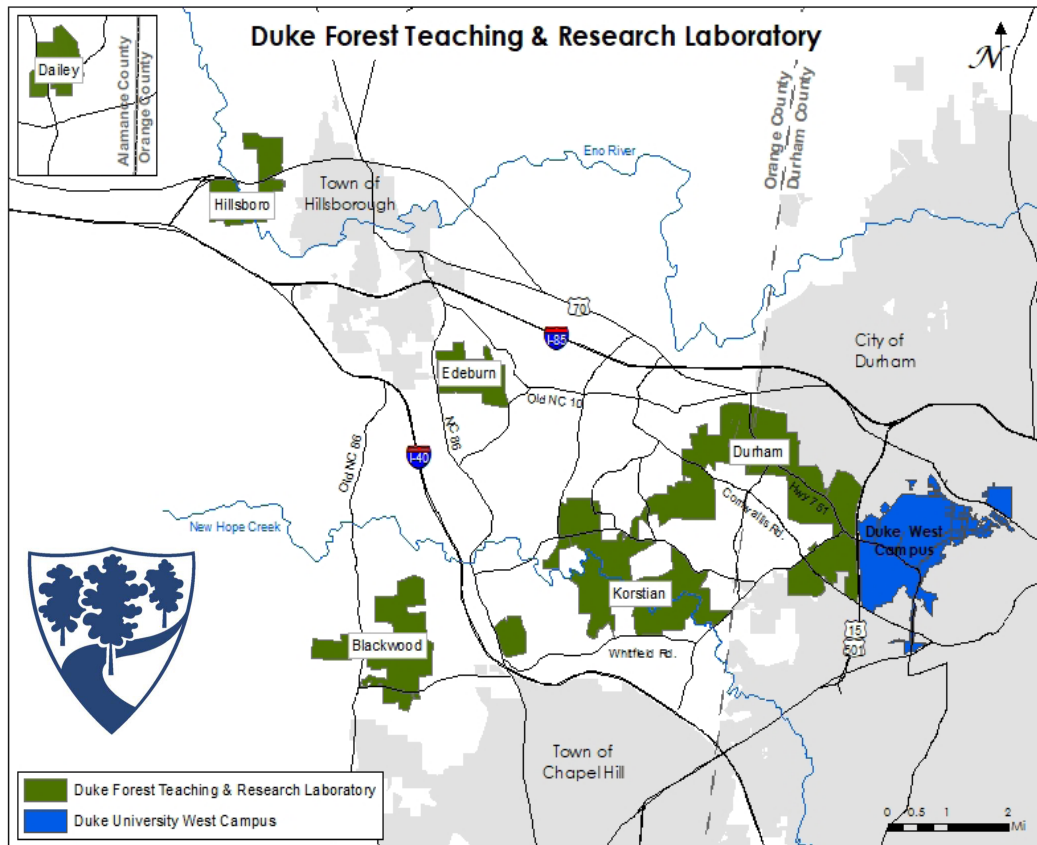
**SEP 26 – DEC 16 2022**

## DO NOT ENTER

---

Duke Forest Office  
919-613-8013

*Signs will be posted at all gated entrances to the Duke Forest. Staff will be issuing citations to any unauthorized users found in the Forest during the hunt.*





**DUKE FOREST**  
Teaching & Research Laboratory  
ESTABLISHED 1951

Office of the Duke Forest • Duke University • Box 90332 • Durham, NC 27708-0332

Nonprofit  
Organization  
U.S. Postage  
PAID  
Durham, N.C.  
Permit No. 60

## 2022 Deer Management Program Notice Summary

From September 26, 2022 through December 16, 2022, the following divisions of the Duke Forest will be **closed to all public access** Monday through Friday:

**Durham Division | Korstian Division | Blackwood Division**

*Edeburn and Hillsboro Divisions will remain open.*

This closure is **for your safety** and for the effectiveness of the Deer Herd Reduction Program. Thank you in advance for your cooperation. The Al Buehler Cross Country Trail and the East Campus Trail are alternate locations for public recreation at Duke.

*(See reverse for more information and a map.)*



Learn more about this program and read FAQ's at [dukeforest.duke.edu/dmap](https://dukeforest.duke.edu/dmap)

## Become a Friend of the Duke Forest



Show your family's appreciation and love for this incredible resource! Become a *Friend of the Forest* by donating \$50 or more annually to the Duke Forest Improvement Fund here: [dukeforest.duke.edu/friends](https://dukeforest.duke.edu/friends)

*Please reach out directly at [dukeforest@duke.edu](mailto:dukeforest@duke.edu) to learn about planned giving or making a high-impact gift for current needs.*

## 2022 Neighbors Message

*Learn more about the research forest in your backyard, how we sustainably steward its resources, our management objectives for the year, and some special announcements. You can also update your contact information with us.*



[dukeforest.duke.edu/2022neighbors](https://dukeforest.duke.edu/2022neighbors)

To keep up-to-date with the Duke Forest, sign-up for our newsletter at:  
[dukeforest.duke.edu/newsletter](https://dukeforest.duke.edu/newsletter)