

Duke Forest Deer Management Program

September 25 - December 15, 2023



The Office of the Duke Forest is preparing for its 16th hunting season through the NC Wildlife Resources Commission Deer Management Assistance Program. The 2023 season will begin on September 25th and continue through December 15th. During this time, the **Durham, Korstian, and Blackwood Divisions of the Duke Forest will be closed to all public access Monday through Friday**. All divisions of the Forest (except Dailey) will be open on Saturdays and Sundays and on November 23rd and 24th in observance of Thanksgiving. The Edeburn and Hillsboro Divisions will remain open as usual throughout the fall.

We appreciate that the demand for nature-based recreation on the Duke Forest remains high. However, deer management remains an indispensable tool for protecting the health of the Duke Forest and its role as a teaching and research laboratory. Please help us safely and effectively take care of the Duke Forest by observing all posted signs and seeking alternate locations for weekday recreation.

Deer management is conducted by a hunting organization that provides landowner assistance; it is not open to the general public. All divisions will be hunted with bow and arrow only.



Researchers, teachers, and students with upcoming or ongoing work in the Forest should contact the Office as soon as possible to discuss arrangements for use during the deer season.

The Office of the Duke Forest appreciates your support and cooperation throughout the program. If you have any questions, please contact the Office via e-mail at dukeforest@duke.edu. You can also learn more about this program at our website: dukeforest.duke.edu/dmap.

Duke Forest Closure Quick Reference Calendar

September 2023							October 2023						
Su	M	T	W	Th	F	Sa	Su	M	T	W	Th	F	Sa
					1	2	1	2	3	4	5	6	7
3	4	5	6	7	8	9	8	9	10	11	12	13	14
10	11	12	13	14	15	16	15	16	17	18	19	20	21
17	18	19	20	21	22	23	22	23	24	25	26	27	28
24	25	26	27	28	29	30	29	30	31				

November 2023							December 2023						
Su	M	T	W	Th	F	Sa	Su	M	T	W	Th	F	Sa
			1	2	3	4						1	2
5	6	7	8	9	10	11	3	4	5	6	7	8	9
12	13	14	15	16	17	18	10	11	12	13	14	15	16
19	20	21	22	23	24	25	17	18	19	20	21	22	23
26	27	28	29	30			24	25	26	27	28	29	30

-  Durham, Korstian, and Blackwood Divisions closed to all public access
-  All divisions open as usual, dawn to dusk

**CLOSED
MON-FRI**

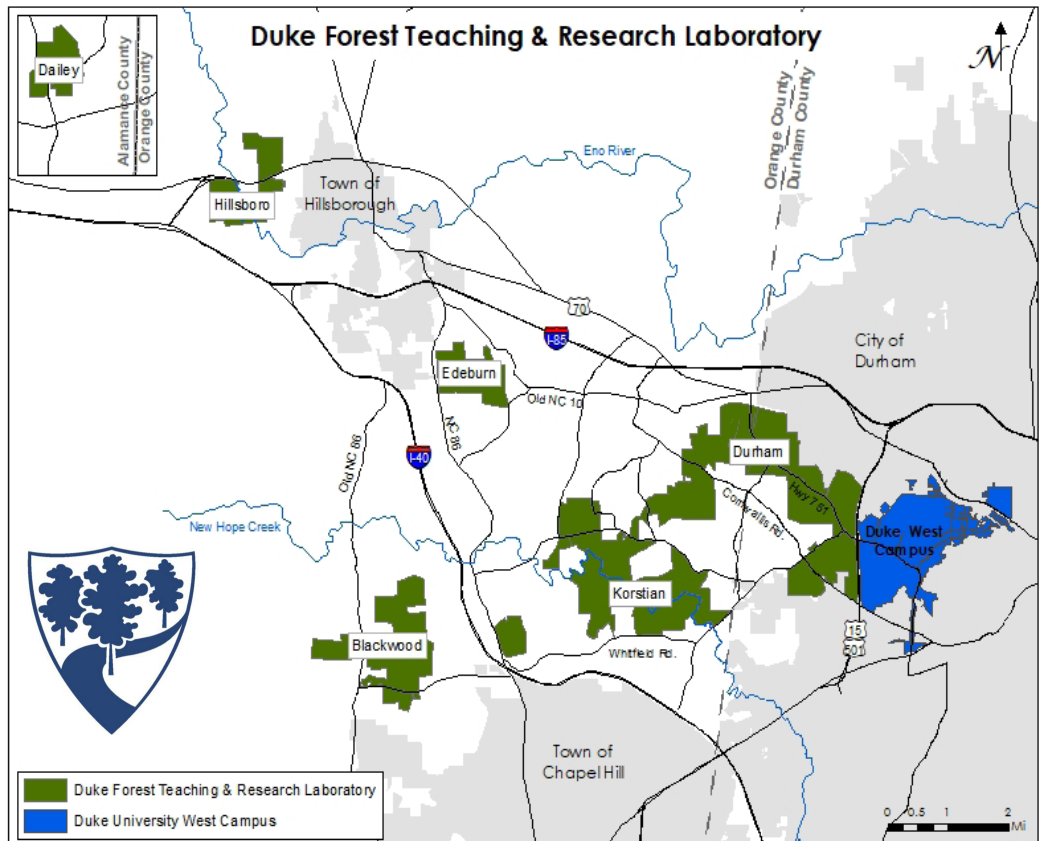

For the Deer Herd Reduction Program


**DO NOT
ENTER**

For more info, including closure end date:
dukeforest.duke.edu/dmap


Office of the Duke Forest (919) 613-8013

Signs will be posted at all gated entrances to the Duke Forest. Staff will be issuing citations to any unauthorized users found in the Forest during the hunt.





DUKE FOREST
Teaching & Research Laboratory
ESTABLISHED 1951

Office of the Duke Forest • Duke University • Box 90332 • Durham, NC 27708-0332

Nonprofit
Organization
U.S. Postage
PAID
Durham, N.C.
Permit No. 60

2023 Deer Management Program Notice Summary

From September 25, 2023 through December 15, 2023, the following divisions of the Duke Forest will be **closed to all public access** Monday through Friday:

Durham Division | Korstian Division | Blackwood Division

Edeburn and Hillsboro Divisions will remain open.

This closure is **for your safety** and for the effectiveness of the Deer Herd Reduction Program. Thank you in advance for your cooperation. The Al Buehler Cross Country Trail and the East Campus Trail are alternate locations for public recreation at Duke.

(See reverse for more information and a map.)



Learn more about this program and read FAQ's at dukeforest.duke.edu/dmap

Become a Friend of the Duke Forest



Share your family's appreciation and love for this incredible resource! Become a *Friend of the Forest* by donating \$50 or more annually to the Duke Forest Improvement Fund here: dukeforest.duke.edu/friends

Please reach out directly at dukeforest@duke.edu to learn about planned giving or making a high-impact gift for current needs.

2023 Neighbors Message

Learn more about the research forest in your backyard, how we sustainably steward its resources, our management objectives for the year, and some special announcements. You can also update your contact information with us if you'd like.



dukeforest.duke.edu/neighbors

To keep up-to-date with the Duke Forest, sign-up for our newsletter at:
dukeforest.duke.edu/newsletter